

I waited patiently

Psalm 40:1 - 4

Steve Walker

D G/D C/D G/D D

I wait-ed pa-tient ly for the Lord He in-clined to me and heard my cry.

5 D G/D C/D G/D D

And lift-ed me up from the de-so-late pit, out of the mi - ry bog.

9 D G/D C/D G/D D

He set my feet on so-lid rock, mak-ing my steps se - cure.

13 D Cmaj7 G

He put a new song, in my mouth, a song of praise

16 D Cmaj7 G

to our God. Ma-ny will see, and ma-ny will fear, and ma -

19 D **To Coda last time** D G/D

ny will put their trust in the Lord. How bless-ed is the man,

24 C/D G/D D G/D

who makes the Lord His on-ly trust, and does not turn to the coun-sel of,

28 C/D G/D D

the proud and wick-ed man. But waits pa - tient - ly

31 G/D **D.S.al Coda** **rit.** D G/D

for the Lord, I wait-ed pa-tient-ly for the Lord

2

34 C/D

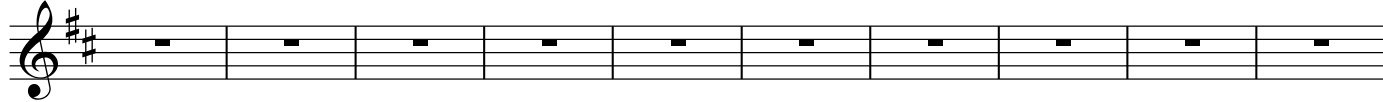
G/D

D

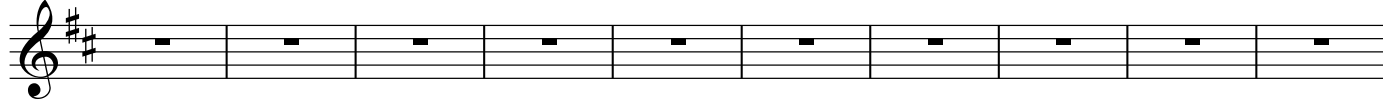
The musical notation is written on a single staff in G major (one sharp). It begins with a treble clef and a key signature of one sharp (F#). Measure 34 starts with a quarter rest, followed by quarter notes G4, A4, B4, and C5. Measure 35 contains quarter notes D5, E5, and F#5. Measure 36 features a half note G5. Measure 37 consists of a whole note G5. The notes are aligned with the lyrics below.

He in - clined to me and heard_ my cry.

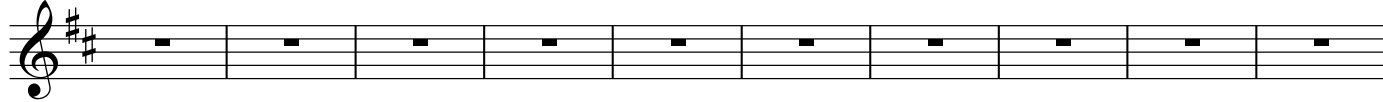
36



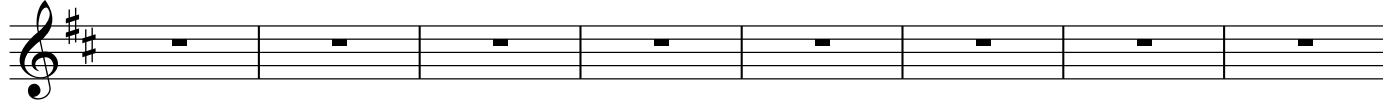
46



56



66



74

